



WTA ARCHITECTS

100 S. Jefferson Ave, Suite 601

Saginaw, Michigan, 48607

988.752.8107 : p

989.573.0855 : f

WTAARCH.COM

BULLETIN NO. 5

491/20167.SDW - PHASE 500:
CENTER FOR FORENSIC PSYCHIATRY- CREATE KITCHEN
SALINE, MICHIGAN

WTA Project No. 2021094
SEPTEMBER 15, 2025

The Contractor will kindly forward to the office of the Architect, within seven days of receiving this bulletin, the change in their contract amount for the following work items listed below. Please submit a quotation for each item listing itemized material costs and itemized labor costs, including the number of hours to complete the work.

ARCHITECTURAL

Item A1	Reference Architectural Drawings
	A. Provide new pipe enclosure in Gymnasium E124 east wall, refer to attached sketch.

END OF BULLETIN NO. 5

WTA ARCHITECTS

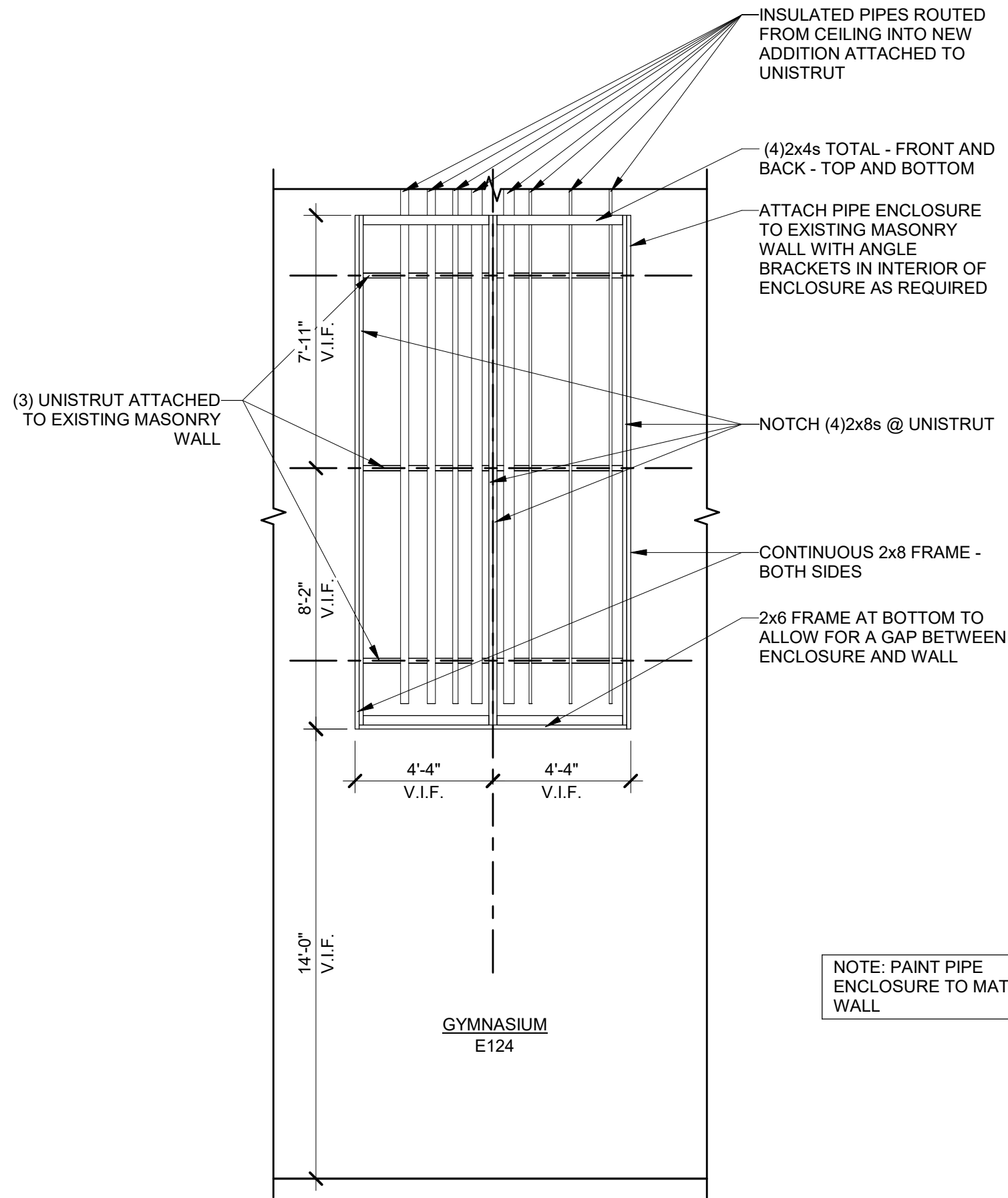
Cariann Davitt Schartow

Attachments: Sketch BL5.1

Cc: Antler Construction Company, Inc.
Department of Technology, Management and Budget
Peter Basso Assoc., Inc.
MacMillian Assoc., Inc.
WTA Architects
CommTech Design
Stafford Smith
ROWE Professional Services Company

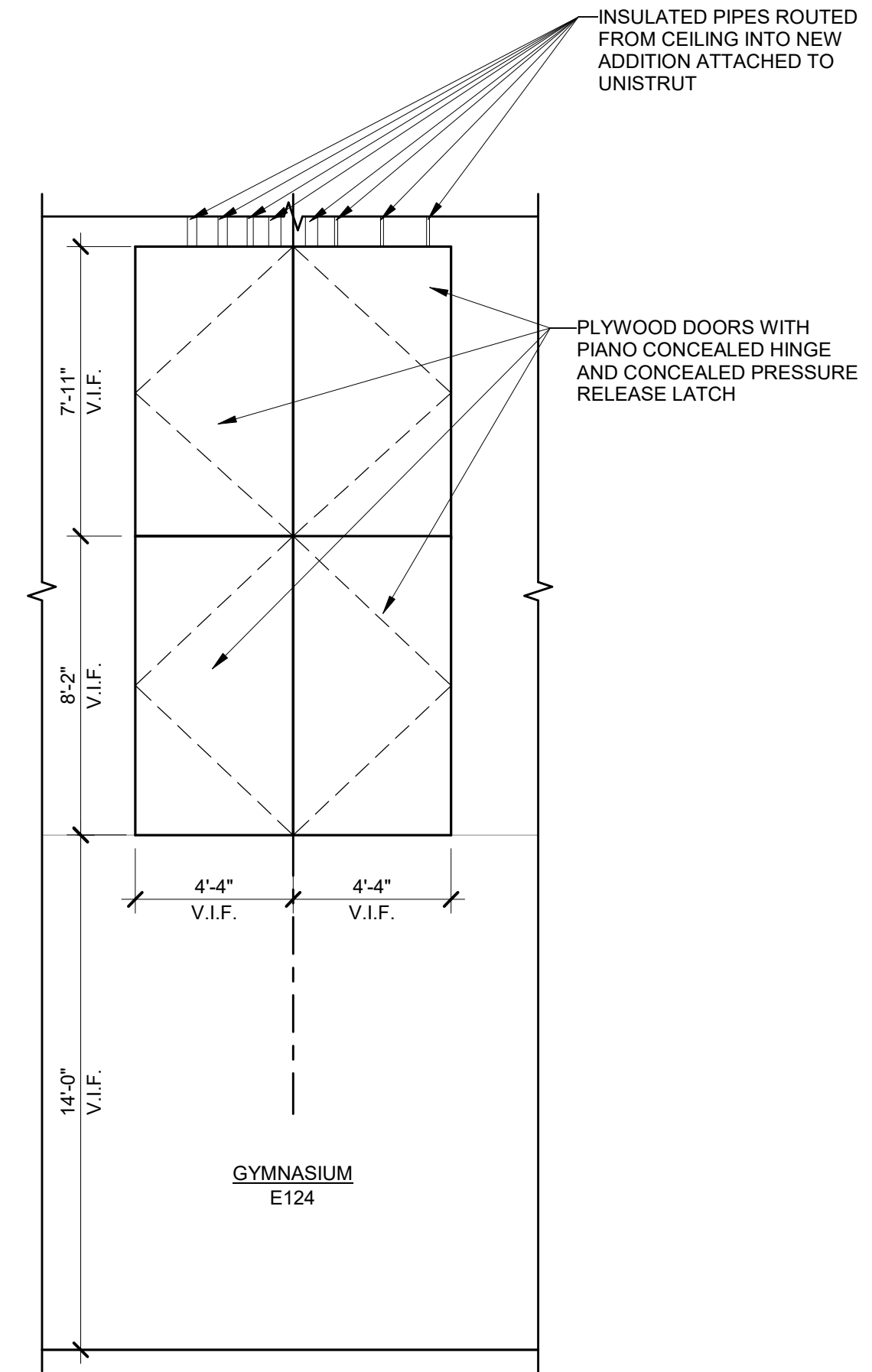
WIGEN
TINCKNELL
ASSOCIATES
ARCHITECTS

SPACE SOLVED.



PIPE ENCLOSURE WITH OUT DOORS

1/BL5.1 SCALE: 1/4" = 1'-0"



PIPE ENCLOSURE WITH DOORS

2/BL5.1 SCALE: 1/4" = 1'-0"