



## WTA ARCHITECTS

100 S. Jefferson Ave, Suite 601

Saginaw, Michigan, 48607

988.752.8107 : p

989.573.0855 : f

[WTAARCH.COM](http://WTAARCH.COM)

### BULLETIN NO. 3

#### 491/20167.SDW - PHASE 500: CENTER FOR FORENSIC PSYCHIATRY- CREATE KITCHEN SALINE, MICHIGAN

WTA Project No. 2021094  
MAY 28, 2025

The Contractor will kindly forward to the office of the Architect, within seven days of receiving this bulletin, the change in their contract amount for the following work items listed below. Please submit a quotation for each item listing itemized material costs and itemized labor costs, including the number of hours to complete the work.

#### GENERAL

- Item G1      Reference Section 22 42 00 **(Re-Issued)**  
A. Added SS-1 specification section as indicated.  
B. Added SF-2 specification as indicated.

#### MECHANICAL

- Item M1      Reference Sheet M2.00 **(Re-Issued)**  
A. Revised SAN as indicated.
- Item M2      Reference Sheet M5.01 **(Re-Issued)**  
A. Remove SAN & V Piping to sink as indicated.  
B. Add FS-1 as indicated

#### ELECTRICAL

- Item E1      Reference Sheet E5.02 **(Re-Issued)**  
A. Add (2) pole breakers in KP-2 for additional electrical connection required for food service equipment.
- Item E2      Reference Sheet E6.01 **(Re-Issued)**  
A. Add circuit and call out for additional electrical connection

END OF BULLETIN NO. 3

**WTA ARCHITECTS**

Ky-Lee Marth

Attachments: Section 224200, Sheets M2.00, M5.01, E5.02, & E6.01

Cc: Antler Construction Company, Inc.

WIGEN  
TINCKNELL  
ASSOCIATES  
ARCHITECTS

SPACE SOLVED.

CENTER FOR FORENSIC PSYCHIATRY- CREATE KITCHEN  
BULLETIN NO. 3  
MAY 28, 2025  
PAGE 2



Department of Technology, Management and Budget  
Peter Basso Assoc., Inc.  
MacMillian Assoc., Inc.  
WTA Architects  
CommTech Design  
Stafford Smith  
ROWE Professional Services Company

SECTION 224200 - PLUMBING FIXTURES

PART 1 - GENERAL.....	1
1.1 RELATED DOCUMENTS.....	1
1.2 DEFINITIONS.....	2
1.3 ACTION SUBMITTALS.....	2
1.4 INFORMATIONAL SUBMITTALS .....	2
1.5 CLOSEOUT SUBMITTALS.....	2
1.6 QUALITY ASSURANCE.....	2
PART 2 - PRODUCTS.....	3
2.1 WATER CLOSETS.....	3
2.2 BATTERY OPERATED SENSOR WATER CLOSET FLUSHOMETERS .....	4
2.3 TOILET SEATS.....	4
2.4 LAVATORIES .....	5
2.5 LAVATORY FAUCETS .....	5
2.6 COUNTER MOUNTING SINKS.....	6
<b>2.7 SERVICE BASINS</b> .....	6
2.8 SINK FAUCETS.....	7
2.9 DISPOSERS.....	8
2.10 FIXTURE SUPPLIES.....	8
2.11 PROTECTIVE SHIELDING GUARDS .....	8
2.12 FIXTURE SUPPORTS .....	9
PART 3 - EXECUTION .....	9
3.1 EXAMINATION .....	9
3.2 INSTALLATION .....	9
3.3 CONNECTIONS .....	11
3.4 FIELD QUALITY CONTROL .....	11
3.5 ADJUSTING .....	11
3.6 CLEANING.....	12
3.7 PROTECTION.....	12

PART 1 - GENERAL

1.1 RELATED DOCUMENTS

- A. Drawings and general provisions of the Contract, including General and Supplementary Conditions and Division 01 Specification Sections, apply to this Section.
- B. Related Sections include the following:
  1. Division 10 Section "Toilet and Bath Accessories."
  2. Division 20 Section "Mechanical General Requirements."
  3. Division 20 Section "Basic Mechanical Materials and Methods."
  4. Division 22 Section "Domestic Water Piping Specialties" for backflow preventers; individual-fixture, water tempering valves; and specialty fixtures not included in this Section.
  5. Division 22 Section "Drainage Piping Specialties" for floor drains, and specialty fixtures not included in this Section.

## 1.2 DEFINITIONS

- A. ABS: Acrylonitrile-butadiene-styrene plastic.
- B. Accessible Fixture: Plumbing fixture that can be approached, entered, and used by people with disabilities.
- C. Cast Polymer: Cast-filled-polymer-plastic material. This material includes cultured-marble and solid-surface materials.
- D. Cultured Marble: Cast-filled-polymer-plastic material with surface coating.
- E. Fitting: Device that controls the flow of water into or out of the plumbing fixture. Fittings specified in this Section include supplies and stops, faucets and spouts, shower heads and tub spouts, drains and tailpieces, and traps and waste pipes. Piping and general-duty valves are included where indicated.
- F. FRP: Fiberglass-reinforced plastic.
- G. PMMA: Polymethyl methacrylate (acrylic) plastic.
- H. PVC: Polyvinyl chloride plastic.
- I. Solid Surface: Nonporous, homogeneous, cast-polymer-plastic material with heat-, impact-, scratch-, and stain-resistance qualities.

## 1.3 ACTION SUBMITTALS

- A. Product Data: For each type of plumbing fixture indicated. Include selected fixture and trim, fittings, accessories, appliances, appurtenances, equipment, and supports. Indicate materials and finishes, dimensions, construction details, and flow-control rates.

## 1.4 INFORMATIONAL SUBMITTALS

- A. Shop Drawings: Diagram power, signal, and control wiring.
- B. Coordination Drawings: Counter cutout templates for mounting of counter-mounted plumbing fixtures.

## 1.5 CLOSEOUT SUBMITTALS

- A. Operation and Maintenance Data: For plumbing fixtures and trim to include in operation and maintenance manuals.

## 1.6 QUALITY ASSURANCE

- A. Source Limitations: Obtain plumbing fixtures, faucets, and other components of each category through one source from a single manufacturer.

1. Exception: If fixtures, faucets, or other components are not available from a single manufacturer, obtain similar products from other manufacturers specified for that category.
- B. Electrical Components, Devices, and Accessories: Listed and labeled as defined in NFPA 70, Article 100, by an NRTL acceptable to authorities having jurisdiction, and marked for intended use.
- C. Regulatory Requirements: Comply with requirements in ICC A117.1, "Accessible and Usable Buildings and Facilities for plumbing fixtures for people with disabilities.
- D. Regulatory Requirements: Comply with requirements in Public Law 102-486, "Energy Policy Act," about water flow and consumption rates for plumbing fixtures.
- E. Regulatory Requirements: Comply with requirements in Public Law 111-380, "Reduction of Lead in Drinking Water Act," about lead content in materials that will be in contact with potable water for human consumption.
- F. Comply with NSF 61, "Drinking Water System Components - Health Effects; Sections 1 through 9," and NSF 372 Drinking Water System Components - Lead Content for potable domestic water piping and components.
- G. Select combinations of fixtures and trim, faucets, fittings, and other components that are compatible.
- H. Comply with applicable ANSI, ASME, ASSE, ASTM, ICC, NSF, and UL standards and other requirements specified for plumbing fixtures, trim, fittings, components, and features.

## PART 2 - PRODUCTS

### 2.1 WATER CLOSETS

- A. Water Closets, WC-1:
  1. Manufacturers: Subject to compliance with requirements, provide products by one of the following:
    - a. American Standard Companies, Inc.; MADERA Floor Mounted Elongated Toilet.
    - b. Ferguson Enterprises, Inc.; ProFlo.
    - c. Kohler Co.; Kingston K-PR96057-T4DS.
    - d. Sloan Valve Company.
    - e. Zurn Plumbing Products Group; EcoVantage.
  2. Description: Wall-mounting, back-outlet, vitreous-china fixture designed for flushometer valve operation.
    - a. Style: Flushometer valve.
      - 1) Bowl Type: Elongated with siphon-jet design.
      - 2) Supply Spud Location: Top.
      - 3) Design Consumption: 1.28 gal./flush.
      - 4) Color: White.

- b. Flushometer: FV-2-2.
- c. Toilet Seat: TS-1.
- d. Fixture Support: Water-closet support combination carrier.

## 2.2 BATTERY OPERATED SENSOR WATER CLOSET FLUSHOMETERS

### A. Flushometers, FV-2-2:

1. Manufacturers: Subject to compliance with requirements, provide products by one of the following:
  - a. American Standard Companies, Inc.
  - b. Delany Products.
  - c. Delta Faucet Company.
  - d. Kohler Co. Wave.
  - e. Moen Commercial.
  - f. Sloan Valve Company.
  - g. Speakman Company.
  - h. Zurn Plumbing Products Group.
2. Description: Flushometer for water-closet-type fixture. Include brass body with corrosion-resistant internal components, non-hold-open feature, courtesy flush feature, control stop with check valve, vacuum breaker, copper or brass tubing, and polished chrome-plated finish on exposed parts.
  - a. Internal Design: Diaphragm or piston operation.
  - b. Style: Exposed.
  - c. Inlet Size: NPS 1.
  - d. Trip Mechanism: Battery-operated sensor actuator.
  - e. Consumption: 1.28 gal./flush.
  - f. Tailpiece Size: NPS 1-1/2 and standard length to top of bowl.

## 2.3 TOILET SEATS

### A. Toilet Seats, TS-1:

1. Manufacturers: Subject to compliance with requirements, provide products by one of the following:
  - a. Bemis Manufacturing Company; 1955SSC/1955SSCT.
  - b. Centoco Manufacturing Corp.
  - c. Church Seats; 295SSC/295SSCT.
  - d. Comfort Seats; a Jones Stephens Brand; Model Number C106SSC.
  - e. Ferguson Enterprises, Inc.; ProFlo PFTSCOF2000WH.
  - f. Olsonite Seat Company; Model 10SSC/10SSCT.
  - g. Plumbtech; Plumbing Technologies, LLC.
  - h. Sanderson Plumbing Products, Inc.; Beneke Div.
  - i. Zurn Plumbing Products Group; 5955STS-WH.
2. Description: Toilet seat for water-closet-type fixture.
  - a. Material: Molded, solid plastic.
  - b. Configuration: Open front without cover.
  - c. Size: Elongated.
  - d. Hinge Type: SC, self-sustaining, check.

- e. Class: Standard commercial.
- f. Color: White.

## 2.4 LAVATORIES

### A. Lavatories, LAV-1:

1. Manufacturers: Subject to compliance with requirements, provide products by one of the following:
  - a. American Standard Companies, Inc.; Lucerne Model 0355.012.
  - b. Ferguson Enterprises, Inc.; ProFlo PF5504.
  - c. Kohler Co.; K 2005 Kingston.
  - d. Sloan Valve Company.
  - e. Zurn Plumbing Products Group; Z5344.
2. Description: Accessible, wall-mounting, vitreous-china fixture.
  - a. Type: With contoured back and side shields.
  - b. Size: 20 by 18 inches rectangular.
  - c. Faucet Hole Punching: Three holes, 2-inch centers.
  - d. Color: White.
  - e. Faucet: LF-1.
  - f. Water Temperature Limiting Device: Required.
  - g. Drain: Grid with offset waste.
  - h. Drain Piping: NPS 1-1/4 chrome-plated, cast-brass P-trap; NPS 1-1/4, 17 gage tubular brass waste to wall; and wall escutcheon.
  - i. Fixture Support: Lavatory with concealed arms.

## 2.5 LAVATORY FAUCETS

### A. Lavatory Faucets, LF-1:

1. Manufacturers: Subject to compliance with requirements, provide products by one of the following:
  - a. American Standard Companies, Inc.; Innsbrook Model 6055.205.
  - b. Chicago Faucets; Model 115.737.21.1.
  - c. Delta Faucet Company; Model 591-LGHGMHDF.
  - d. Geberit Manufacturing, Inc.
  - e. Kohler Co.; K13461 (with K13478-A escutcheon).
  - f. Moen Commercial.
  - g. Sloan Valve Company.
  - h. Speakman Company.
  - i. Zurn Plumbing Products Group; Z6917.
2. Description: Single hole faucet with escutcheon suitable for 4 inch centers, grid strainer, and no lift rod hole.
  - a. Body Material: Commercial, solid brass.
  - b. Finish: Polished chrome plate.
  - c. Mounting: Deck, concealed.
  - d. Inlet(s): NPS 1/2.
  - e. Spout Outlet: Vandal resistant spray, 0.5 gpm.
  - f. Operation: Sensor/Battery.

## 2.6 COUNTER MOUNTING SINKS

### A. Sinks, SK-1:

1. Manufacturers: Subject to compliance with requirements, provide products by one of the following:
  - a. Elkay Manufacturing Co.
  - b. Franke Consumer Products, Inc., Commercial Div.
  - c. Just Manufacturing Company.
  - d. Moen Commercial.
2. Description: Single-bowl, deep basin, counter-mounting, lay-in stainless-steel sink.
  - a. Overall Dimensions: 19 inches left to right by 23 inches front to back.
  - b. Metal Thickness: 18 gage, with sound dampened underside.
  - c. Bowl:
    - 1) Dimensions: 16 inches by 13 inches by 9 inches deep.
    - 2) Drain: 3-1/2-inch grid.
  - d. Sink Faucet: SF-1.
  - e. Water Temperature Limiting Device: Not required.
  - f. Drain Piping: NPS 1-1/2 chrome-plated, cast-brass P-trap; 17 gage tubular brass waste to wall; and wall escutcheon(s).
  - g. Disposer: D-1.
  - h. Dishwasher Air-Gap Fitting: Not required.
  - i. Hot-Water Dispenser: Not required.

## 2.7 SERVICE BASINS

### A. Service Basins SS-1:

1. Manufacturers: Subject to compliance with requirements, provide products by one of the following:
  - a. Acorn Engineering Company.
  - b. Crane Plumbing, LLC; Fiat Products; an American Standard Brand.
  - c. Florestone Products Co., Inc.
  - d. Precast Terrazzo Enterprises, Inc.
  - e. Stern-Williams Co., Inc.
  - f. Crane Plumbing, LLC; Fiat Products; an American Standard Brand.
  - g. Ferguson Enterprises, Inc.; ProFlo.
  - h. Florestone Products Co., Inc.
  - i. Mustee, E. L. & Sons, Inc.
  - j. Swan; American Bath Group.
  - k. Zurn Plumbing Products Group; Light Commercial Operation.
2. Description: Flush-to-wall, floor-mounting, cast-polymer fixture with rim guard.
  - a. Shape: Square
  - b. Size: 24 by 24 inches
  - c. Height: 10 inches
  - d. Color: Not applicable.

- e. Faucet: SF-2.
- f. Drain: Grid with NPS 2

**B. Sink Faucets, SF-2:**

1. Manufacturers: Subject to compliance with requirements, provide products by one of the following:
  - a. American Standard Companies, Inc.
  - b. Chicago Faucets; Model 897.
  - c. Delta Faucet Company; Model 28C2383.
  - d. Ferguson Enterprises, Inc.; ProFlo PF1118.
  - e. Kohler Co.
  - f. Moen Commercial.
  - g. Speakman Company; SC5811-RCP-LEV-5H-WHK.
  - h. Symmons Industries, Inc.
  - i. T & S Brass and Bronze Works, Inc.
  - j. Zurn Plumbing Products Group.
2. Description: Service sink faucet with stops in shanks, vacuum breaker, hose-thread outlet, and pail hook. Include hot- and cold-water indicators; coordinate faucet inlets with supplies and fixture holes; coordinate outlet with spout and fixture receptor. Include 5 foot rubber hose and wall mounted hose clamp.
  - a. Body Material: Commercial, solid brass.
  - b. Finish: Polished chrome plate.
  - c. Maximum Flow Rate: 2.5 gpm, unless otherwise indicated.
  - d. Mixing Valve: Two handle.
  - e. Centers: 8 inches.
  - f. Mounting: Back/wall.
  - g. Handle(s): Lever.
  - h. Inlet(s): NPS 1/2
  - i. Spout Type: Rigid, solid brass with wall brace and pail hook.
  - j. Spout Outlet: Hose thread.
  - k. Vacuum Breaker: Required.
  - l. Operation: Noncompression, manual.

**2.8 SINK FAUCETS**

**A. Sink Faucets, SF-1:**

1. Manufacturers: Subject to compliance with requirements, provide products by one of the following:
  - a. American Standard Companies, Inc.
  - b. Chicago Faucets; No. 786-GN8AFCABCP.
  - c. Kohler Co.
  - d. Moen Commercial.
  - e. Speakman Company.
  - f. T & S Brass and Bronze Works, Inc.
  - g. Zurn Plumbing Products Group; Z831C4-140.

2. Description: Sink faucet. Include hot- and cold-water indicators; coordinate faucet inlets with supplies and fixture holes; coordinate outlet with spout and fixture receptor.
  - a. Body Material: Commercial, solid brass.
  - b. Finish: Polished chrome plate.
  - c. Mixing Valve: Two handle.
  - d. Centers: 8 inches.
  - e. Mounting: Deck.
  - f. Handle(s): Wrist blade, 4 inches.
  - g. Operation: Noncompression, manual.
  - h. Inlet(s): NPS 1/2.
  - i. Spout Type: 70-degree restricted swing gooseneck.
  - j. Spout Outlet: Aerator.
    - 1) Aerator.
    - 2) Laminar flow or plain end for patient care areas.
  - k. Maximum Flow Rate:
    - 1) 1.5 gpm.

## 2.9 DISPOSERS

### A. Disposers, D-1:

1. Manufacturers: Subject to compliance with requirements, provide products by one of the following:
  - a. In-Sink-Erator; a div. of Emerson Electric Co.
2. Description: Continuous-feed, food-waste disposer. Include reset button; wall switch; corrosion-resistant chamber with jam-resistant, cutlery- or stainless-steel grinder or shredder; NPS 1-1/2 outlet; quick-mounting, stainless-steel sink flange; antisplash guard; and combination cover/stopper.
  - a. Motor: 115-V ac, 1725 rpm, 1-1/4 hp with overload protection.

## 2.10 FIXTURE SUPPLIES

- A. Manufacturers: Subject to compliance with requirements, provide products by one of the following:
  1. BrassCraft; a Masco Company.
  2. McGuire Mfg. Co., Inc.
  3. Any of the approved plumbing fixture manufacturers.
- B. Description: Chrome-plated brass, loose-key or screwdriver angle stops with brass stems; rigid, chrome-plated copper risers; and chrome-plated wall flanges.

## 2.11 PROTECTIVE SHIELDING GUARDS

### A. Protective Shielding Pipe Covers (PSG-1):

1. Manufacturers: Subject to compliance with requirements, provide products by one of the following:
  - a. Engineered Brass Co.
  - b. Insul-Tect Products Co.; a Subsidiary of MVG Molded Products.
  - c. McGuire Manufacturing Co., Inc.
  - d. Plumberex Specialty Products Inc.
  - e. TCI Products; SG-200BV.
  - f. TRUEBRO, Inc.
  - g. Zurn Plumbing Products Group; Z8946-3-NT.
2. Description: Manufactured plastic wraps for covering plumbing fixture hot- and cold-water supplies and trap and drain piping. Comply with Americans with Disabilities Act (ADA) requirements.

## 2.12 FIXTURE SUPPORTS

- A. Manufacturers: Subject to compliance with requirements, provide products by one of the following:
  1. Josam Company.
  2. MIFAB Manufacturing Inc.
  3. Smith, Jay R. Mfg. Co.
  4. Tyler Pipe; Wade Div.
  5. Watts Drainage Products Inc.; a div. of Watts Industries, Inc.
  6. Zurn Plumbing Products Group; Specification Drainage Operation.
- B. Lavatory Supports:
  1. Description: Lavatory carrier with concealed arms and tie rods for wall-mounting, lavatory-type fixture. Include steel uprights with feet.
  2. Accessible-Fixture Support: Include rectangular steel uprights.

## PART 3 - EXECUTION

### 3.1 EXAMINATION

- A. Examine roughing-in of water supply and sanitary drainage and vent piping systems to verify actual locations of piping connections before plumbing fixture installation.
- B. Examine cabinets, counters, floors, and walls for suitable conditions where fixtures will be installed.
- C. Proceed with installation only after unsatisfactory conditions have been corrected.

### 3.2 INSTALLATION

- A. Assemble plumbing fixtures, trim, fittings, and other components according to manufacturers' written instructions.
- B. Install off-floor supports, affixed to building substrate, for wall-mounting fixtures.

1. Use carrier supports with waste fitting and seal for back-outlet fixtures.
  2. Use carrier supports without waste fitting for fixtures with tubular waste piping.
  3. Use chair-type carrier supports with rectangular steel uprights for accessible fixtures.
- C. Install back-outlet, wall-mounting fixtures onto waste fitting seals and attach to supports.
- D. Install floor-mounting fixtures on closet flanges or other attachments to piping or building substrate.
- E. Install wall-mounting fixtures with tubular waste piping attached to supports.
- F. Install counter-mounting fixtures in and attached to casework.
- G. Install fixtures level and plumb according to roughing-in drawings. Install accessible fixtures at heights required by local codes.
- H. Install water-supply piping with stop on each supply to each fixture to be connected to water distribution piping. Attach supplies to supports or substrate within pipe spaces behind fixtures. Install stops in locations where they can be easily reached for operation.
1. Exception: Fixtures with flushometer valves, and faucets or valves with integral stops.
- I. Install ASSE 1070 water-temperature limiting devices on supplies for lavatories and sinks that will be used for handwashing, and where specified. Refer to Division 20 Section "Domestic Water Piping Specialties."
- J. Install trap and tubular waste piping on drain outlet of each fixture to be directly connected to sanitary drainage system.
- K. Install tubular waste piping on drain outlet of each fixture to be indirectly connected to drainage system.
- L. Install protective shielding guards PSG-1 on exposed traps and supplies of lavatories, and sinks used for hand washing.
- M. Install toilet seats on water closets.
- N. Install faucet-spout fittings with specified flow rates and patterns in faucet spouts if faucets are not available with required rates and patterns. Include adapters if required.
- O. Install water-supply flow-control fittings with specified flow rates in fixture supplies at stop valves.
- P. Install faucet flow-control fittings with specified flow rates and patterns in faucet spouts if faucets are not available with required rates and patterns. Include adapters if required.
- Q. Install traps on fixture outlets.
1. Exception: Omit trap on fixtures with integral traps.

2. Exception: Omit trap on indirect wastes, unless otherwise indicated.

- R. Install escutcheons at piping wall ceiling penetrations in exposed, finished locations and within cabinets and millwork. Use deep-pattern escutcheons if required to conceal protruding fittings. Escutcheons are specified in Division 20 Section "Basic Mechanical Materials and Methods."
- S. Seal joints between fixtures and walls, floors, and countertops using sanitary-type, one-part, mildew-resistant silicone sealant. Match sealant color to fixture color. Sealants are specified in Division 07 Section "Joint Sealants."

### 3.3 CONNECTIONS

- A. Piping installation requirements are specified in other Division 20 and 22 Sections. Drawings indicate general arrangement of piping, fittings, and specialties.
- B. Connect fixtures with water supplies, stops, and risers, and with traps, soil, waste, and vent piping. Use size fittings required to match fixtures.
- C. Individual water line branches, waste lines, vents, and traps for connection to individual fixtures, fixture fittings and specialties shall be in accordance with the schedule on the Drawings.
- D. Ground equipment according to Division 26 Section "Grounding and Bonding."
- E. Connect wiring according to Division 26 Section "Conductors and Cables."

### 3.4 FIELD QUALITY CONTROL

- A. Verify that installed plumbing fixtures are categories and types specified for locations where installed.
- B. Check that plumbing fixtures are complete with trim, faucets, fittings, and other specified components.
- C. Inspect installed plumbing fixtures for damage. Replace damaged fixtures and components.
- D. Test installed fixtures after water systems are pressurized for proper operation. Replace malfunctioning fixtures and components, then retest. Repeat procedure until units operate properly.

### 3.5 ADJUSTING

- A. Operate and adjust faucets and controls. Replace damaged and malfunctioning fixtures, fittings, and controls.
- B. Adjust water pressure at faucets and flushometer valves to produce proper flow and stream.
- C. Adjust flow at laboratory faucets having serrated nozzles to prevent splashing.
- D. Replace washers and seals, or cartridges of leaking and dripping faucets and stops.

- E. Install fresh batteries in sensor-operated mechanisms.

### 3.6 CLEANING

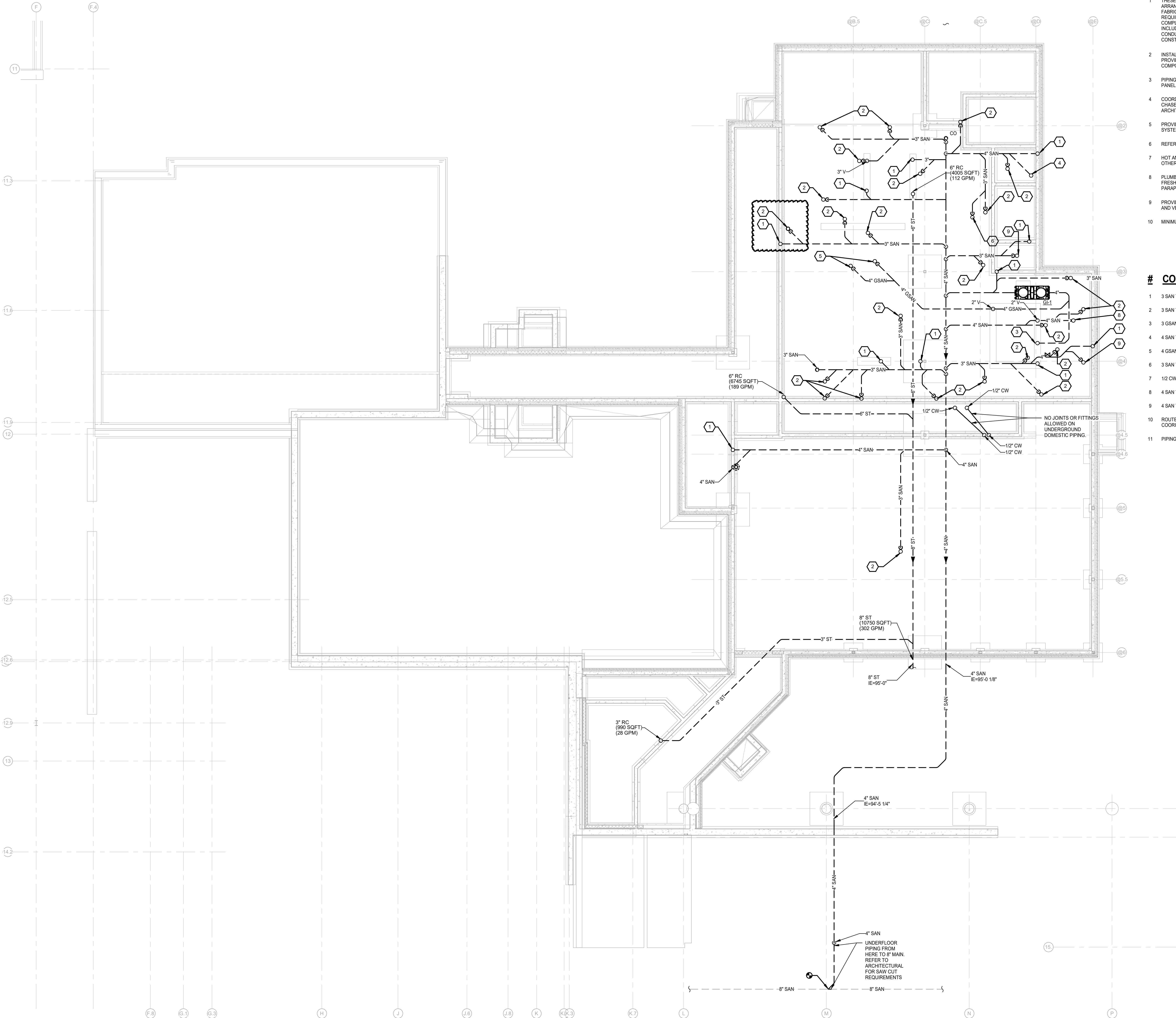
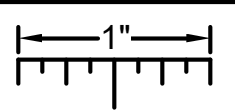
- A. Clean fixtures, faucets, and other fittings with manufacturers' recommended cleaning methods and materials. Do the following:
  - 1. Remove faucet spouts and strainers, remove sediment and debris, and reinstall strainers and spouts.
  - 2. Remove sediment and debris from drains.
- B. After completing installation of exposed, factory-finished fixtures, faucets, and fittings, inspect exposed finishes and repair damaged finishes.

### 3.7 PROTECTION

- A. Provide protective covering for installed fixtures and fittings.
- B. Do not allow use of plumbing fixtures for temporary facilities unless approved in writing by Owner.

END OF SECTION 224200

THE FOLLOWING DIMENSION EQUALS ONE INCH WHEN PRINTED TO SCALE.



**PLUMBING GENERAL NOTES:**

- THESE DRAWINGS ARE DIAGRAMMATIC, AND REPRESENT THE GENERAL INTENT AND ARRANGEMENT OF SYSTEMS. THEY ARE NOT TO BE CONSIDERED FABRICATION/COORDINATION/SHOP DRAWINGS. COORDINATION WITH OTHER TRADES IS REQUIRED. PROVIDE THE ADDITIONAL FITTINGS AND OFFSETS THAT WILL BE REQUIRED TO COMPLETE EACH SYSTEM AND TO AVOID INTERFERENCES WITH ALL OTHER SYSTEMS INCLUDING THE STRUCTURE, SHEET METAL, OTHER PIPING SYSTEMS, ELECTRICAL CONDUITS, BUS DUCTS, CABLE TRAY, LIGHT FIXTURES, ETC. AND/OR OTHER SPACE CONSTRAINTS.
- INSTALL SYSTEMS SUCH THAT REQUIRED CLEARANCE AND SERVICE ACCESS SPACE IS PROVIDED AROUND ALL MECHANICAL AND ELECTRICAL EQUIPMENT, AND AROUND ANY COMPONENTS WHICH REQUIRE SERVICE ACCESS.
- PIPING SHALL NOT BE INSTALLED ABOVE ELECTRICAL TRANSFORMERS, SWITCHBOARDS, PANELBOARDS OR MOTOR CONTROL CENTERS.
- COORDINATE AND PROVIDE ACCESS DOORS WITHIN INACCESSIBLE CEILING, SHAFT, AND CHASE AREAS FOR ALL COMPONENTS WHICH REQUIRE SERVICE ACCESS. REFER TO ARCHITECTURAL DRAWINGS FOR CEILING TYPES.
- PROVIDE SUPPLEMENTARY STEEL AS REQUIRED FOR THE PROPER SUPPORT OF ALL SYSTEMS.
- REFER TO ARCHITECTURAL PLANS FOR DIMENSIONED LOCATIONS OF PLUMBING FIXTURES.
- HOT AND COLD WATER PIPING RUN-OUTS TO LAVATORIES AND SINKS SHALL BE 1/2" UNLESS OTHERWISE NOTED.
- PLUMBING VENT PIPING THROUGH ROOF SHALL BE LOCATED A MINIMUM OF 10'-0" FROM ANY FRESH AIR INTAKE LOCATION AND A MINIMUM OF 18" CLEAR FROM THE INSIDE FACE OF PARAPET.
- PROVIDE CODE REQUIRED CLEARANCE FOR ALL CLEANOUTS INSTALLED IN SANITARY WASTE AND VENT PIPING.
- MINIMUM UNDERGROUND PIPE SIZE SHALL BE 3".

**# CONSTRUCTION KEY NOTES:**

- 3 SAN TO LAV/SINK.
- 3 SAN TO FLOOR DRAIN/SINK.
- 3 GSAN TO SINK.
- 4 SAN TO WC.
- 4 GSAN TO FLOOR TROUGH.
- 3 SAN TO FLOOR TROUGH.
- 1/2 CW TO DRAIN COOLER.
- 4 SAN TO FLOOR TROUGH.
- 4 SAN TO FLOOR DRAIN/SINK.
- ROUTE IN CEILING SPACE OF GYM. ROUTE ALONG SIDE NEW MECHANICAL PIPING. COORDINATE FINAL ROUTING WITH MECHANICAL TRADES.
- PIPING IN THIS AREA ROUTED WITHIN SECOND FLOOR CEILING SPACE.

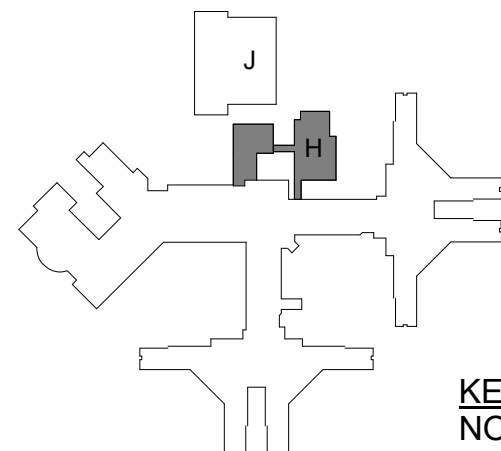
B3	BULLETIN NO. 3	05/23/25
B2	BULLETIN NO. 2	04/15/25
A3	STATE REVIEW SET	12/20/23
A3	ADDENDUM #3	09/29/23
NO.	REVISION	DATE

STATE OF MICHIGAN  
DEPARTMENT OF TECHNOLOGY, MANAGEMENT AND BUDGET  
FACILITIES AND BUSINESS SERVICES ADMINISTRATION  
DESIGN AND CONSTRUCTION DIVISION  
ADAM LACH, RA, DIRECTOR

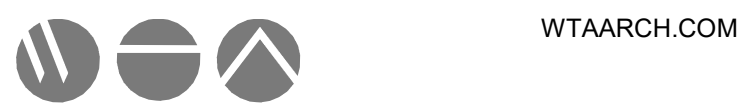
FILE NO.  
491/20167.SDW

FUNDING CODE  
171CODHST255

CONTRACT NO.  
Y22003



KEY PLAN  
NOT TO SCALE



**WTA ARCHITECTS**

100 S. Jefferson Ave., Suite 601  
Saginaw, Michigan 48607  
989 752 8107

COPYRIGHT © 2023

PROJECT TITLE  
491/20167.SDW - PHASE 500:

**CENTER FOR FORENSIC  
PSYCHIATRY - CREATE  
KITCHEN**

SALINE, MICHIGAN

SHEET TITLE  
**UNDERGROUND PLUMBING  
PLAN**

PROJECT NUMBER  
**2021094**

PROJECT DATE  
**SEPTEMBER 6, 2023**

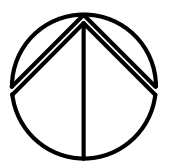
CHECKED BY  
**WEK**

SHEET NUMBER

**M2.00**

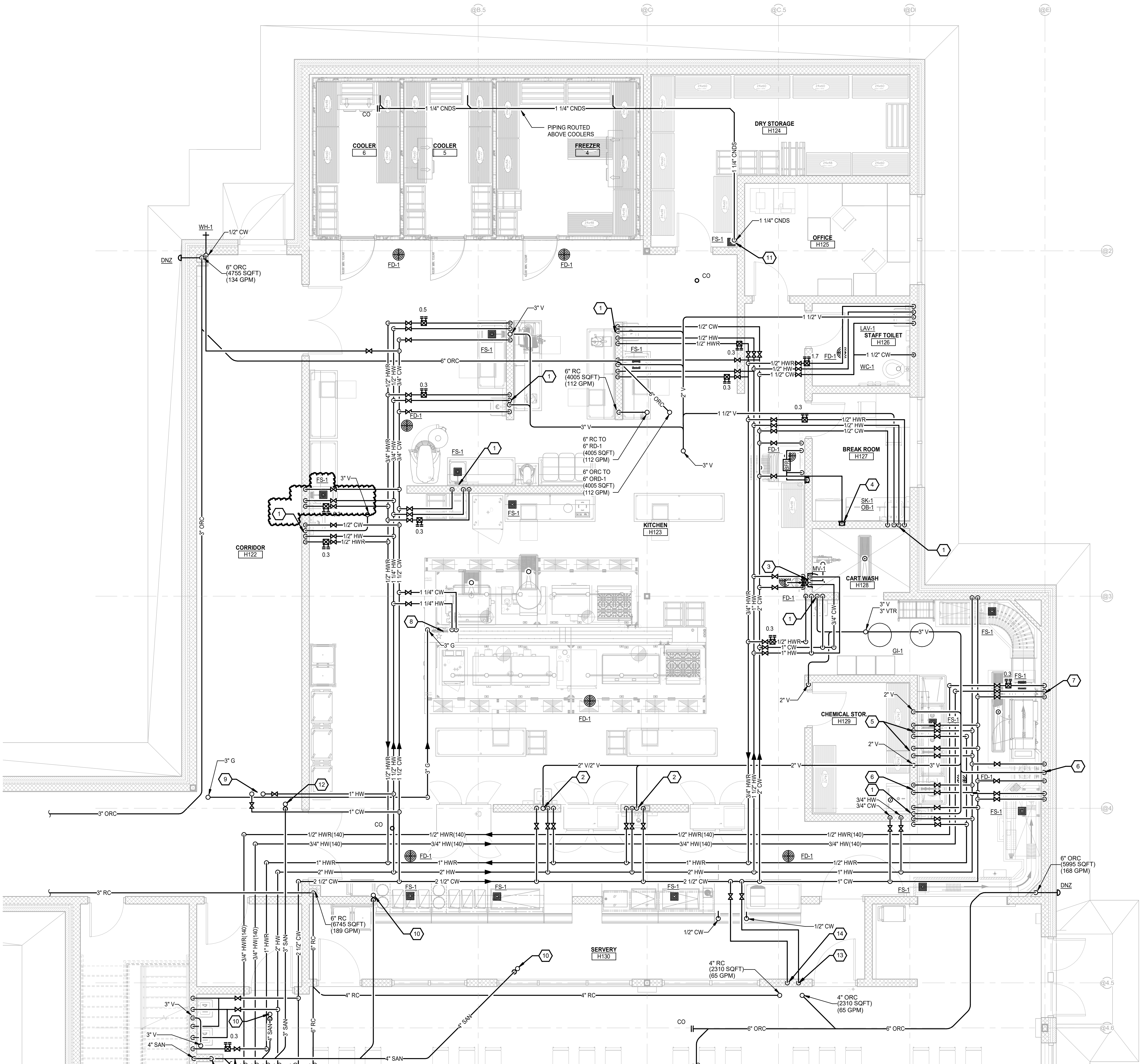


**Peter Basso Associates Inc.**  
CONSULTING ENGINEERS  
5145 Livernois, Suite 100  
Troy, Michigan 48068-3276  
Tel: 248-879-5666  
Fax: 248-879-0007  
www.PeterBassoAssociates.com  
PBA Project No. 3021-002



**UNDERGROUND PLUMBING PLAN**  
SCALE: 1/8" = 1'-0"

THE FOLLOWING DIMENSION EQUALS ONE INCH WHEN PRINTED TO SCALE.



1 FIRST FLOOR PLUMBING ENLARGED KITCHEN PLAN

SCALE: 1/4" = 1'-0"

PLUMBING GENERAL NOTES:

- THESE DRAWINGS ARE DIAGRAMMATIC, AND REPRESENT THE GENERAL INTENT AND ARRANGEMENT OF SYSTEMS. THEY ARE NOT TO BE CONSIDERED FABRICATION/COORDINATION SHOP DRAWINGS. COORDINATION WITH OTHER TRADES IS REQUIRED. PROVIDE THE ADDITIONAL FITTINGS AND OFFSETS THAT WILL BE REQUIRED TO COMPLETE EACH SYSTEM AND TO AVOID INTERFERENCES WITH ALL OTHER SYSTEMS INCLUDING THE STRUCTURE, SHEET METAL, OTHER PIPING SYSTEMS, ELECTRICAL CONDUITS, BUS DUCTS, CABLE TRAY, LIGHT FIXTURES, ETC. AND/OR OTHER SPACE CONSTRAINTS.
- INSTALL SYSTEMS SUCH THAT REQUIRED CLEARANCE AND SERVICE ACCESS SPACE IS PROVIDED AROUND ALL MECHANICAL AND ELECTRICAL EQUIPMENT, AND AROUND ANY COMPONENTS WHICH REQUIRE SERVICE ACCESS.
- PIPING SHALL NOT BE INSTALLED ABOVE ELECTRICAL TRANSFORMERS, SWITCHBOARDS, PANELBOARDS OR MOTOR CONTROL CENTERS.
- COORDINATE AND PROVIDE ACCESS DOORS WITHIN INACCESSIBLE CEILING, SHAFT, AND CHASE AREAS FOR ALL COMPONENTS WHICH REQUIRE SERVICE ACCESS. REFER TO ARCHITECTURAL DRAWINGS FOR CEILING TYPES.
- PROVIDE SUPPLEMENTARY STEEL AS REQUIRED FOR THE PROPER SUPPORT OF ALL SYSTEMS.
- REFER TO ARCHITECTURAL PLANS FOR DIMENSIONED LOCATIONS OF PLUMBING FIXTURES.
- HOT AND COLD WATER PIPING RUN-OUTS TO LAVATORIES AND SINKS SHALL BE 1/2" UNLESS OTHERWISE NOTED.
- PLUMBING VENT PIPING THROUGH ROOF SHALL BE LOCATED A MINIMUM OF 10'-0" FROM ANY FRESH AIR INTAKE LOCATION AND A MINIMUM OF 18" CLEAR FROM THE INSIDE FACE OF PARAPET.
- PROVIDE CODE REQUIRED CLEARANCE FOR ALL CLEANOUTS INSTALLED IN SANITARY WASTE AND VENT PIPING.
- MINIMUM UNDERGROUND PIPE SIZE SHALL BE 3".

# CONSTRUCTION KEY NOTES:

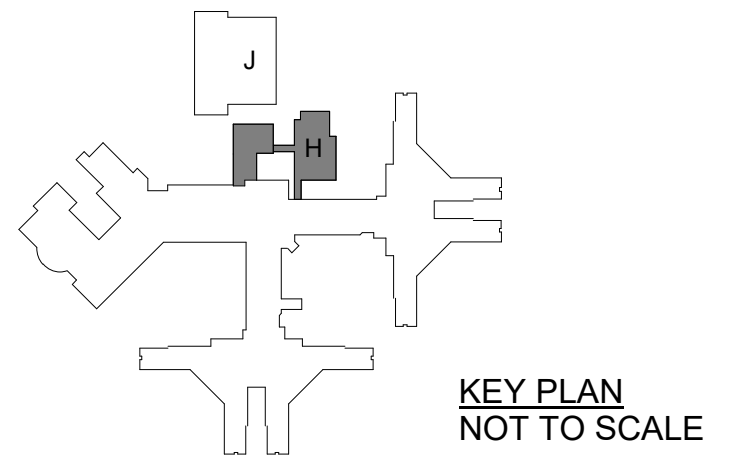
- 3 SAN, 2 V, 1/2 CW, 1/2 HW, AND 1/2 HWR TO SINK.
- 3 SAN, 1 1/2 V, 1/2 CW, 1/2 HW TO SINK.
- 3/4 CW AND 3/4 HW THROUGH CODE REQUIRED BACKFLOW PREVENTER AND CONNECT TO HOSE REAL MIXING VALVE.
- 1/2 CW TO OULETBOX FOR ICE MAKER.
- 3/4 CW, 3/4 HW TO 3 COMPARTMENT SINK. ROUTE 3 GSAN FROM WASH COMPARTMENT ROUTE 1W FROM RINSE AND SANITIZE COMPARTMENT AND TERMINATE AT CODE REQUIRED DISTANCE ABOVE FLOOR SINK.
- 3/4 CW, 3/4 HW TO PRE-SPRAY AND FOOD GRINDER.
- 1/2 CW, 1/2 HW(140), AND 1/2 HWR(140) THROUGH CODE REQUIRED BACKFLOW PREVENTER, ROUTE 1/2 CW, 1/2 HW(140) FROM BACKFLOW PREVENTER TO DISHWASHER. ROUTE 1W FROM BACKFLOW PREVENTER AND DISHWASHER AND TERMINATE AT CODE REQUIRED DISTANCE ABOVE FLOOR SINK.
- 3/4 CW, 3/4 HW, 1/2 HWR, AND 3 GAS TO UTILITY DISTRIBUTIONS SYSTEM.
- 1 CW AND 1 HW TO PENTHOUSE ABOVE.
- 4 SAN TO FLOOR DRAIN/SINK.
- TERMINATE CONDENSATE AT CODE REQUIRED DISTANCE ABOVE FLOOR DRAIN/SINK.
- 3 SAN FOR FLOOR DRAIN/SINK.
- 1/2 CW TO UNDERGROUND TO SERVE BEVERAGE DISPENSER.
- 1/2 CW TO UNDERGROUND TO SERVE COLD FOOD SERVING COUNTER.

B3	BULLETIN NO. 3	05/23/25
B2	BULLETIN NO. 2	04/15/25
A3	STATE REVIEW SET	12/20/23
A3	ADDENDUM #3	09/29/23
NO.	REVISION	DATE

STATE OF MICHIGAN  
DEPARTMENT OF TECHNOLOGY, MANAGEMENT AND BUDGET  
FACILITIES AND BUSINESS SERVICES ADMINISTRATION  
DESIGN AND CONSTRUCTION DIVISION  
ADAM LACH, RA, DIRECTOR

FILE NO.  
491/20167.SDW

FUNDING CODE 171CODHHS7255	CONTRACT NO. Y22003
-------------------------------	------------------------



WTAAARCH.COM  
**WTAA ARCHITECTS**  
100 S. Jefferson Ave., Suite 601  
Saginaw, Michigan 48607  
989 752 8107  
COPYRIGHT © 2023

PROJECT TITLE  
491/20167.SDW - PHASE 500:  
CENTER FOR FORENSIC  
PSYCHIATRY - CREATE  
KITCHEN  
SALINE, MICHIGAN

SHEET TITLE  
PLUMBING ENLARGED PLAN

PROJECT NUMBER 2021094	SHEET NUMBER M5.01
PROJECT DATE SEPTEMBER 6, 2023	
CHECKED BY WEK	

**PBA**  
Peter Basso Associates Inc  
CONSULTING ENGINEERS  
5145 Livernois, Suite 100  
Troy, Michigan 48068-3276  
Tel: 248-879-5666  
Fax: 248-879-0007  
www.PeterBassoAssociates.com  
PBA Project No. 3021-0002

PANELBOARD KP-1																							
#	LOAD TYPE	DESCRIPTION	CB TYPE	CB	A		B		C		CB	CB TYPE	DESCRIPTION	LOAD TYPE	#								
1	K	86: FOOD PROCESSOR		20	1200	1800					20		85: FOOD PROCESSOR	K	2								
3	K	84: SLICER		20			672	1800			20		69: MIXER, COUNTER	K	4								
5										1439	1199				6								
7	K	66: MIXER, FLOOR		20	1439	1199						20	GFCI	65: CHILLER/FREEZER, BLAST	K	8							
9							1439	1199							K	10							
11									2233	4798						12							
13	K	61: INDUCTION CHARGER	GFCI	20	2233	4798					50		41: UDS SYSTEM	K	K	14							
15							2233	4798								16							
17	K	40: FIRE SUPPRESSION...		20					1500	1500	20		40: FIRE SUPPRESSION...	K	K	18							
19	K	39: HOOD		20	1500	1500					20		39: HOOD	K	K	20							
21							432	1428			20		20: ICE MAKER/BIN	K	K	22							
23	K	26: DISPOSER, GARBAGE		15					432	720						24							
25					432	720					15		12: DISPOSER, GARBAGE	K	K	26							
27	K	6: COFFEE MAKER		20			1440	720								28							
29	K	5: CABINET, HEATED PASS-THRU	GFCI	20					1612	780	20		4: DISPLAY, CASE REFRIGERATED	K	K	30							
31					1612	780							4: DISPLAY, CASE REFRIGERATED	K	K	32							
33	K	65A: CHILLER/FREEZER, BLAST, EVAP	GFCI	20			240	1800			20		41: UDS SYSTEM FUEL/SHUNT...	K	K	34							
35									1560	420	20	GFCI	1D: SERVING LINE - COLD FOOD	K	K	36							
37	K	8: SOILED DISHTABLE TRAY CONVEYOR	GFCI	20	1560	420					20	GFCI	1C: SERVING LINE - COLD FOOD	K	K	38							
39	--	SPARE	--	20			0	420			20	GFCI	1C: SERVING LINE - COLD FOOD	K	K	40							
41	--	SPARE	--	20					0	0	20	--	SPARE	--	K	42							
					21194		18622		18194														
					0A		0B		0C														
PANELBOARD INFORMATION														BRANCH CIRCUIT CONNECTED LOAD		DEMAND FACTOR		CALCULATED LOAD		FEEDER AND OVERCURRENT...		NOTES	
VOLTAGE:		208Y/120V		CONTINUOUS LOAD (C):		0		100% 0		125% 0													
BUS AMPACITY:		225A		ELECTRIC HEAT (E):		0		100% 0		125% 0													
MAIN TYPE:		MLO		NON-CONTINUOUS LOAD (NC):		0		100% 0		100% 0													
MINIMUM A.I.C.:		10,000		KITCHEN LOAD (K):		58008.54		65.00% 37705.55		100% 37705.55													
MOUNTING:		SURFACE		RECEPT BASE LOAD (R):		0		100% 0		100% 0													
				RECEPT DEMAND LOAD (R):		0		50% 0		100% 0													
				LIGHTING LOAD (L):		0		100% 0		125% 0													
				ADDITIONAL TRACK LIGHTING...		0				100% 0													
				MOTORS, HIGHEST LOAD (M):		0		125 % 0		100% 0													
PANELBOARD LOCATION				MOTORS, REMAINING		0		100 % 0		100 % 0													
					NOTE: DEMAND AND SIZING INFORMATION IS CALCULATED...					TOTAL (kVA): 37.71													
										TOTAL... 104.66					TOTAL... 104.66								

© Copyright 2022 by Peter Basso Associates...

© Copr. 2022 by Peter Basso Associates,...

PANELBOARD KP-2															
#	LOAD TYPE	DESCRIPTION	CB TYPE	CB	A	B	C	CB	CB TYPE	DESCRIPTION	LOAD TYPE	#			
1	--	SPARE	--	20	0	1654		20	GFCI	1B SERVING LINE - HOT/COLD FOOD COMBO	K	2			
3	--	SPARE	--	20		0	1654	0	20	--	SPARE	--	4		
5	--	SPARE	--	20				0	0	20	--	SPARE	--	6	
7	--	SPARE	--	20	0	0			20	--	SPARE	--	8		
9	R	RECEPTS: H123,H125	--	20		1080	0		20	--	SPARE	--	10		
11	R	RECEPTS: H124,H126,H127	--	20			1080	1260	20	RECEPTS:H123,H127	R	12			
13	R	RECEPTS: H123,H129	--	20	900	900			20	RECEPTS:H123	R	14			
15	R	RECEPTS:H123,H124	--	20		720	1272		20	KITCHEN COUNTERTOP	K	16			
17	C	REFRIGERATOR:H112	GFCI	20			1200	1500	20	COFFEE:H112	NC	18			
19	NC	MICROWAVE:H112	--	20	1500	1200			20	GARBAGE DISPOSAL:H112	NC	20			
21	--	SPARE	--	20		0	0		20	--	SPARE	--	22		
23	--	SPARE	--	20				0	0	20	--	SPARE	--	24	
25	--	SPARE	--	20	0	1654			20	GFCI	1B SERVING LINE - HOT/COLD FOOD COMBO	K	26		
27	K	1BA SERVING LINE - HVC FOOD...	GFCI	20		420	1654		20			28			
29	K	1A SERVING LINE - HOT FOOD	GFCI	20			1654	1654	20	GFCI	1A SERVING LINE - HOT FOOD	K	30		
31	K		--	20	1654	1654			20	--	SPARE	--	32		
33	R	ROOM MECH/ELEC ROOM RECEPTS	--	20		1080	0		20	--	SPARE	--	34		
35	--	SPARE	--	20			0	0	20	--	SPARE	--	36		
37	--	SPARE	--	20	0	0			20	--	SPARE	--	38		
39	--	SPARE	--	20		0	0		20	--	SPARE	--	40		
41	--	SPARE	--	20			0	0	20	--	SPARE	--	42		
					11114	7679	8347								
					0A	0B	0C								
PANELBOARD INFORMATION															
VOLTAGE: 208Y/120V		BRANCH CIRCUIT CONNECTED LOAD		CONTINUOUS LOAD (C):		1200	100% 1200	FEEDER AND OVERCURRENT...		NOTES					
BUS AMPACITY: 100A		ELECTRIC HEAT (E):		0		100% 0	125% 1500								
MAIN TYPE: MLO		NON-CONTINUOUS LOAD (NC):		4200		100% 4200	100% 4200								
MINIMUM A.I.C.: 10,000		KITCHEN LOAD (K):		14920.8		65.00% 9698.52	100% 9698.52								
MOUNTING: SURFACE		RECEPT BASE LOAD (R):		7020		100% 7020	100% 7020								
		RECEPT DEMAND LOAD (R):		0		50% 0	100% 0								
		LIGHTING LOAD (L):		0		100% 0	125% 0								
		ADDITIONAL TRACK LIGHTING...		0		100% 0	100% 0								
		MOTORS, HIGHEST LOAD (M):		0		125 % 0	100% 0								
PANELBOARD LOCATION		MOTORS, REMAINING		0		100 % 0	100 % 0								
					TOTAL (kVA): 22.12										
					TOTAL... 61.39		TOTAL... 62.23								
NOTE: DEMAND AND SIZING INFORMATION IS CALCULATED...															

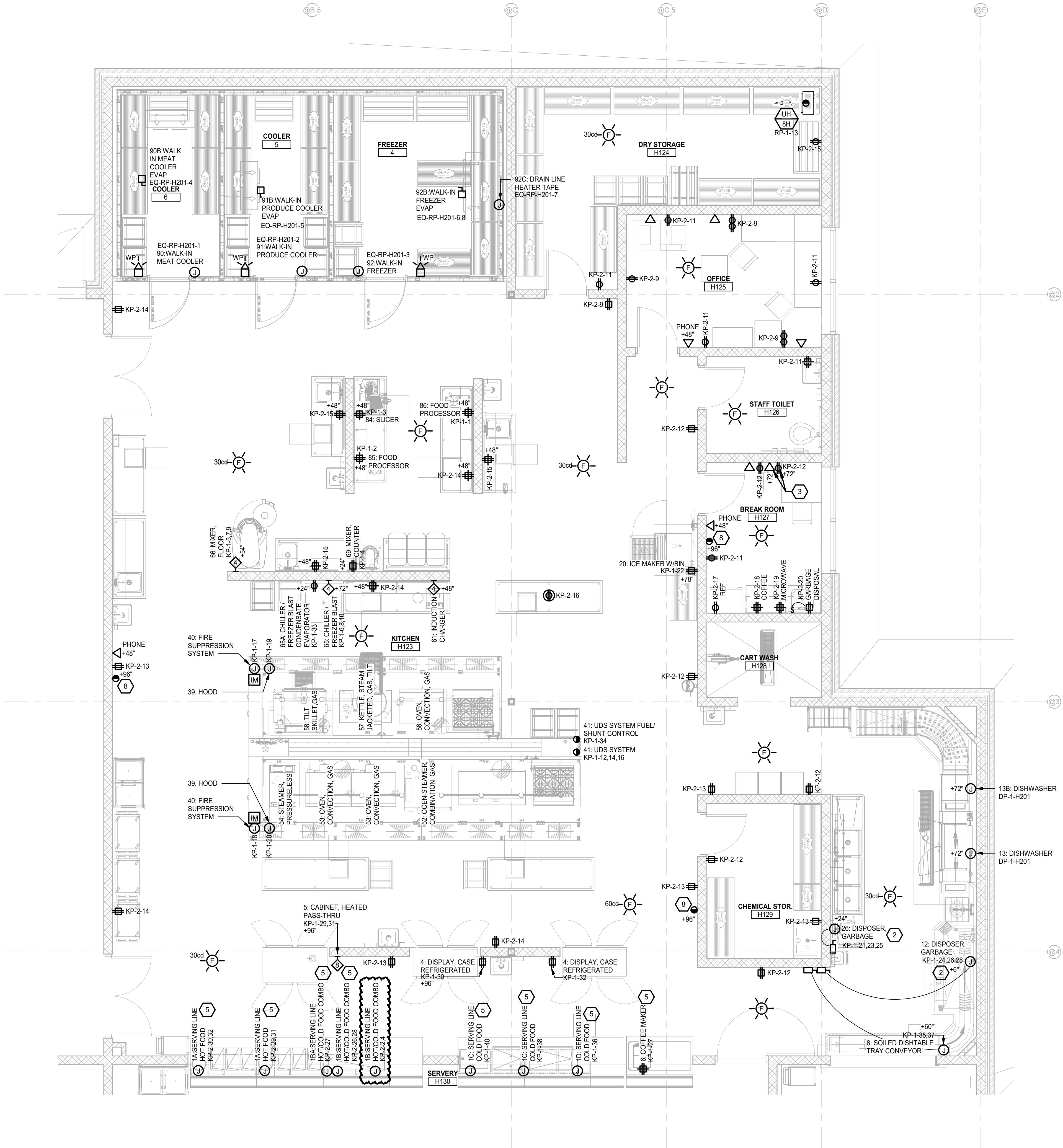
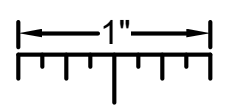
© Copr. 2022 by Peter Basso Associates...

© Copr. 2022 by Peter Basso Associates,...

PANELBOARD RP-1														
#	LOAD TYPE	DESCRIPTION	CB TYPE	CB	A	B	C	CB	CB TYPE	DESCRIPTION	LOAD TYPE	#		
1	R	RECEPTS: H119,H131,EXT. ROOF		20	1260	1260		20		RECEPTS: H131,H132,H133,EXT	R	2		
3	R	RECEPTS: H131,H120		20		1080	1080	20		RECEPTS: H107,H130,H131,EXT	R	4		
5	R	RECEPTS: H122,EXT		20			360	0	20	--	SPARE	--	6	
7	--	SPARE	--	20	0	0			20	--	SPARE	--	8	
9	--	SPARE	--	20			0	600	20		NORTH OVERHEAD DOOR,H120	M	10	
11	M	SOUTH OVERHEAD DOOR: H120	--	20				600	1000	20	FIRE ALARM NAC: H201	C	12	
13	M	UH-8H: H124		15	528	528			15	UH-9H: H201	M	14		
15	M	UH-10H: H201		15		528	528		15	CUH-5H: H120	M	16		
17	M	CUH-6H: H121		15				528	528	15	CUH-3H: H132	M	18	
19	M	CUH-4H: H131		15	528	528			15	EF-5H: ROOF	M	20		
21	--	SPARE	--	20			0	528	15	EF-7H: ROOF	M	22		
23	--	SPARE	--	20				0	528	15	EF-8H: ROOF	M	24	
25	M	CUH-11H: H119		15	528	0			20	--	SPARE	--	26	
27	--	SPARE	--	20		0	0		20	--	SPARE	--	28	
29	--	SPARE	--	20				0	0	20	--	SPARE	--	30
31	--	SPARE	--	20	0	0			20	--	SPARE	--	32	
33	--	SPARE	--	20		0	0		20	--	SPARE	--	34	
35	--	SPARE	--	20				0	0	20	--	SPARE	--	36
37	--	SPARE	--	20	0	0			20	--	SPARE	--	38	
39	--	SPARE	--	20			0	0	20	--	SPARE	--	40	
41	--	SPARE	--	20				0	0	20	--	SPARE	--	42
					5160	4344	3544							
					0A	0B	0C							
PANELBOARD INFORMATION				BRANCH CIRCUIT CONNECTED LOAD				DEMAND FACTOR		CALCULATED LOAD		FEEDER AND OVERCURRENT...		NOTES
VOLTAGE:		208Y/120V		CONTINUOUS LOAD (C):		1000		100% 1000		125% 1250				
BUS AMPACITY:		100A		ELECTRIC HEAT (E):		0		100% 0		125% 0				
MAIN TYPE:		MLO		NON-CONTINUOUS LOAD (NC):		0		100% 0		100% 0				
MINIMUM A.I.C.:		10,000		KITCHEN LOAD (K):		0		100% 0		100% 0				
MOUNTING:		SURFACE		RECEPT BASE LOAD (R):		5040		100% 5040		100% 5040				
				RECEPT DEMAND LOAD (R):		0		50% 0		100% 0				
				LIGHTING LOAD (L):		0		100% 0		125% 0				
				ADDITIONAL TRACK LIGHTING...:		0				100% 0				
				MOTORS, HIGHEST LOAD (M):		600		125 % 750		100% 750				
				MOTORS, REMAINING		6408		100 % 6408		100 % 6408				
<u>PANELBOARD LOCATION</u>								TOTAL (kVA): 13.2						
				NOTE: DEMAND AND SIZING INFORMATION IS CALCULATED...				TOTAL... 36.63						
										TOTAL... 37.33				

© Copr. 2022 by Peter Basso Associates...

THE FOLLOWING DIMENSION EQUALS ONE INCH WHEN PRINTED TO SCALE.



1  
E3.01 FIRST FLOOR ELECTRICAL ENLARGED KITCHEN PLAN  
SCALE: 1/4" = 1'-0"

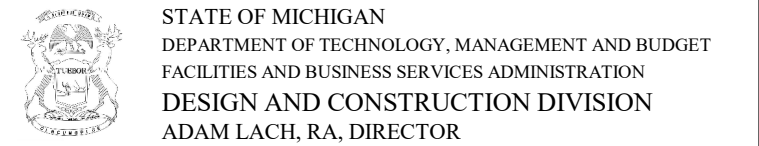
ELECTRICAL GENERAL NOTES:

- THESE DRAWINGS REPRESENT THE GENERAL EXTENT AND ARRANGEMENT OF SYSTEMS. COORDINATE EXACT EQUIPMENT LOCATIONS, ELEVATIONS, AND FINAL CONNECTION REQUIREMENTS. PROVIDE EACH SYSTEM COMPLETE, INCLUDING ALL NECESSARY COMPONENTS, FITTINGS AND OFFSETS.
- INSTALL SYSTEMS SUCH THAT REQUIRED CLEARANCE AND SERVICE ACCESS SPACE IS PROVIDED AROUND ALL MECHANICAL AND ELECTRICAL EQUIPMENT, AND AROUND ANY COMPONENTS WHICH REQUIRE SERVICE ACCESS.
- COORDINATE AND PROVIDE ACCESS DOORS WITHIN INACCESSIBLE CEILING, SHAFT, AND CHASE AREAS FOR ALL COMPONENTS WHICH REQUIRE SERVICE ACCESS. REFER TO ARCHITECTURAL DRAWINGS FOR CEILING TYPES.
- PROVIDE SUPPLEMENTARY STEEL AS REQUIRED FOR THE PROPER SUPPORT OF ALL SYSTEMS.
- TRANSFORMER SECONDARY CONDUCTORS SHALL BE SIZED IN ACCORDANCE WITH TRANSFORMER CIRCUIT SIZING SCHEDULE SHOWN ON "ELECTRICAL STANDARD SCHEDULES DRAWING" UNLESS OTHERWISE NOTED.
- MOTOR CIRCUIT PROTECTION SHALL BE SIZED IN ACCORDANCE WITH MOTOR CIRCUIT SIZING SCHEDULES SHOWN ON "ELECTRICAL STANDARD SCHEDULES DRAWING" UNLESS OTHERWISE NOTED.
- COORDINATE THE MOUNTING HEIGHTS OF DEVICES WITH ARCHITECTURAL ELEVATIONS AND THE TRADES INSTALLING THE WORK.
- REFER TO MECHANICAL SCHEDULE SHEETS FOR ELECTRICAL REQUIREMENTS FOR MECHANICAL EQUIPMENT. PROVIDE ALL CONNECTIONS, STARTERS, DISCONNECTS, ETC. AS REQUIRED BY SCHEDULES AND WHERE NOTED ELSEWHERE. VERIFY REQUIREMENTS OF ALL MECHANICAL EQUIPMENT WITH SHOP DRAWINGS SUBMITTALS. NOTIFY ENGINEER OF ANY CONFLICTS BETWEEN EQUIPMENT SUBMITTALS AND ELECTRICAL DRAWINGS. WHERE CIRCUIT SIZES ARE SHOWN ON THE ELECTRICAL DRAWINGS THAT DIFFER FROM WHAT IS INDICATED ON THE MECHANICAL SCHEDULES, PROVIDE THE CIRCUIT OF HIGHER AMPACITY.
- REFER TO TEMPERATURE CONTROLS SHEETS FOR REQUIRED FIRE ALARM CONTROL MODULES, DUCT SMOKE DETECTORS, AND MOTOR CONTROLLERS. PROVIDE ALL ACCESSORIES INDICATED.
- REFER TO LIGHTING CONTROL SCHEDULE FOR ROOM CONTROL AND EMERGENCY LIGHTING CIRCUIT CONTROL REQUIREMENTS. DESIGNATION FOR ROOM IS INDICATED AS A LETTERED OVAL SYMBOL.
- ALL FIRE ALARM DEVICES SHALL BE COMPATIBLE WITH EXISTING SIMPLEX GRINNEL 4120 FIRE ALARM SYSTEM. PROVIDE NECESSARY COMPONENTS, MODULES, ETC. AS REQUIRED FOR A FULLY FUNCTIONAL SYSTEM. RE-TEST AND CERTIFY EXISTING FIRE ALARM SYSTEM AT COMPLETION OF PROJECT.
- PROVIDE TAMPER RESISTANT COVER PLATE KENALL WPP SERIES OR EQUAL WHERE PATIENTS WILL HAVE ACCESS TO DEVICES.
- REFER TO SECURITY/TELECOMMUNICATION DRAWINGS FOR FINAL DEVICE LOCATIONS AND RACEWAY REQUIREMENTS. COORDINATE WITH SECURITY REQUIREMENTS WITH INSTALLING TRADES.
- COORDINATE ELECTRICAL REQUIREMENTS DEVICE LOCATIONS AND MOUNTING HEIGHTS WITH KITCHEN EQUIPMENT DRAWINGS, SHOP DRAWINGS AND KITCHEN EQUIPMENT INSTALLER.

# CONSTRUCTION KEY NOTES:

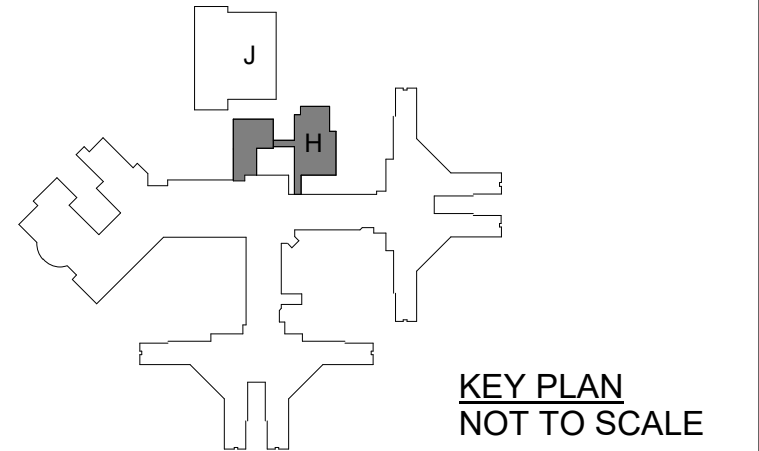
- PROVIDE TOGGLE SWITCH LOCK GUARD FOR BOILER DISCONNECT LOCKING MEANS.
- PROVIDE INTERWIRE TO CONTROL PANEL. COORDINATE WITH FOOD SERVICE INSTALLER AND INSTALLATION INSTRUCTIONS.
- COORDINATE FINAL LOCATION OF TV WITH ARCHITECTURAL DRAWINGS AND TRADES PRIOR TO ROUGH IN.
- INSTALL BOTTOM OF LIGHT FIXTURE AT 8'-0" AFF.
- ROUTE BRANCH CIRCUIT IN FLOOR AND STUB UP TO FINAL LOCATION. COORDINATE FINAL LOCATION WITH FOOD SERVICE DRAWINGS AND TRADES.
- MATCH ON-OFF TIMES WITH EXISTING SITE LIGHTING. COORDINATE EXACT TIMES WITH OWNER. CONNECT PHOTO CELL CONTROL TO EXISTING MAIN BUILDING PHOTO CELL WIRING/CONTROL.
- 4" HOUSEKEEPING PAD.
- LINE VOLTAGE CLOCK STANDARD ELECTRIC TIME FARADAY 2384 OR OTHER CLOCK COMPATABLE WITH EXISTING SYSTEM. EXTEND WIRING FROM EXISTING CLOCK HEAD END SYSTEM AS REQUIRED.

B3	BULLETIN NO. 3	05/23/25
B2	BULLETIN NO. 2	04/15/25
	STATE REVIEW SET	12/20/23
A3	ADDENDUM #3	09/29/23
NO.	REVISION	DATE



FILE NO.  
491/20167.SDW

FUNDING CODE 171CODHHS7255	CONTRACT NO. Y22003
-------------------------------	------------------------



WTAAARCH.COM

**WTA ARCHITECTS**

100 S. Jefferson Ave., Suite 601  
Saginaw, Michigan 48607  
989 752 8107

COPYRIGHT © 2023

PROJECT TITLE  
491/20167.SDW - PHASE 500:  
**CENTER FOR FORENSIC  
PSYCHIATRY - CREATE  
KITCHEN**  
SALINE, MICHIGAN

SHEET TITLE  
**ELECTRICAL ENLARGED  
PLAN**

PROJECT NUMBER <b>2021094</b>	SHEET NUMBER
PROJECT DATE <b>SEPTEMBER 6, 2023</b>	<b>E6.01</b>
CHECKED BY TLC	



**Peter Basso Associates Inc**  
CONSULTING ENGINEERS  
5145 Livernois, Suite 100  
Troy, Michigan 48068-3276  
Tel: 248-879-5666  
Fax: 248-879-0007  
www.PeterBassoAssociates.com  
PBA Project No. 3021-0002